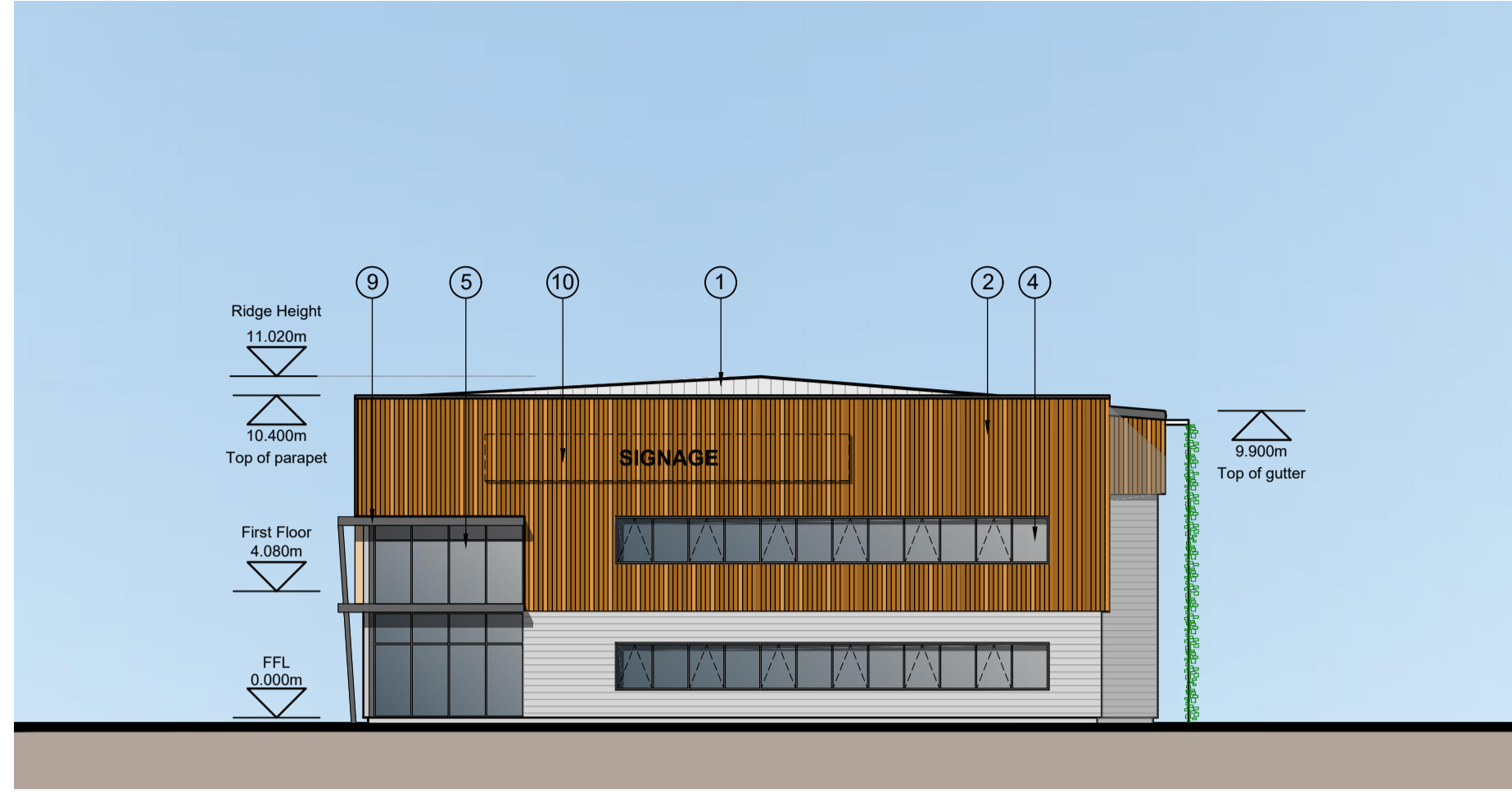
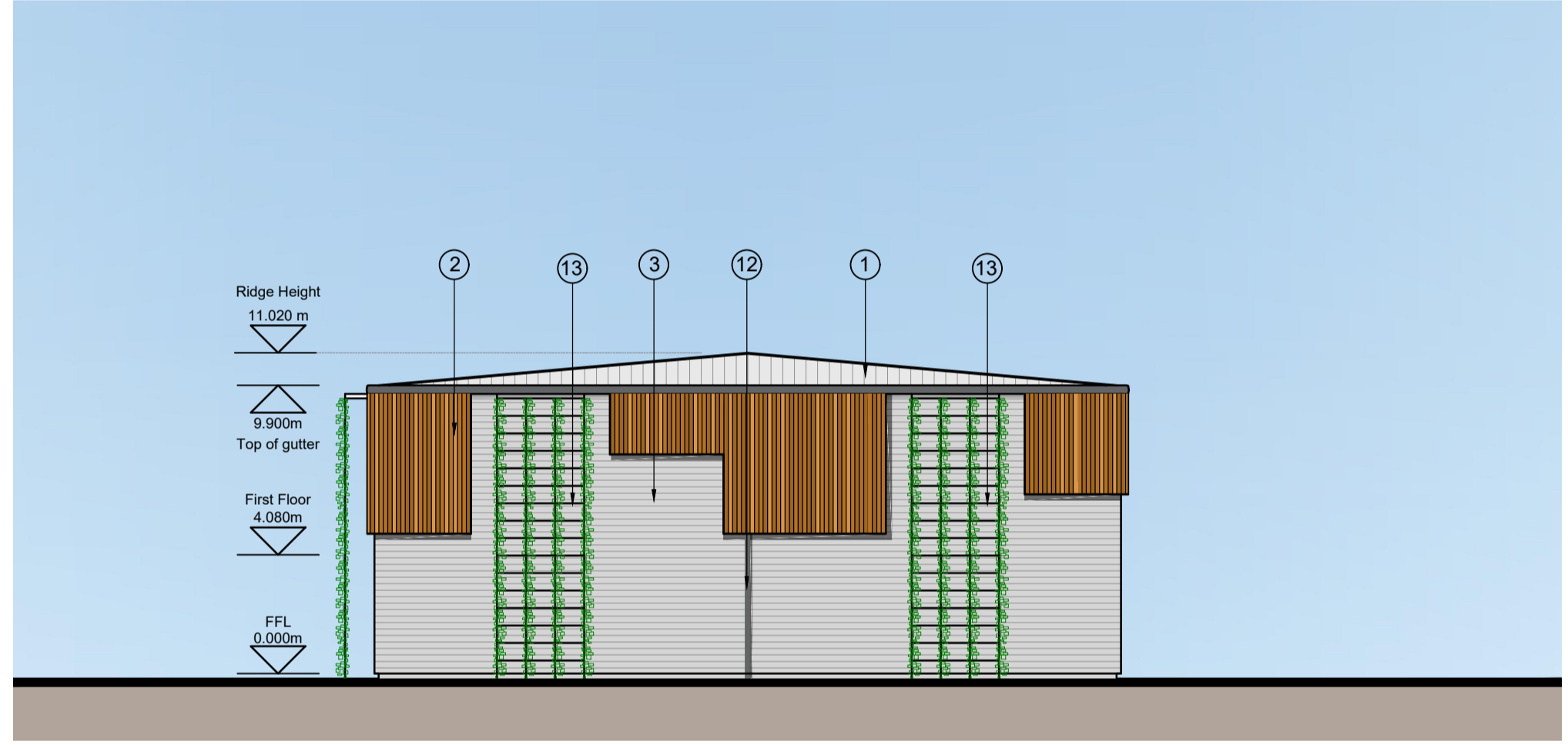
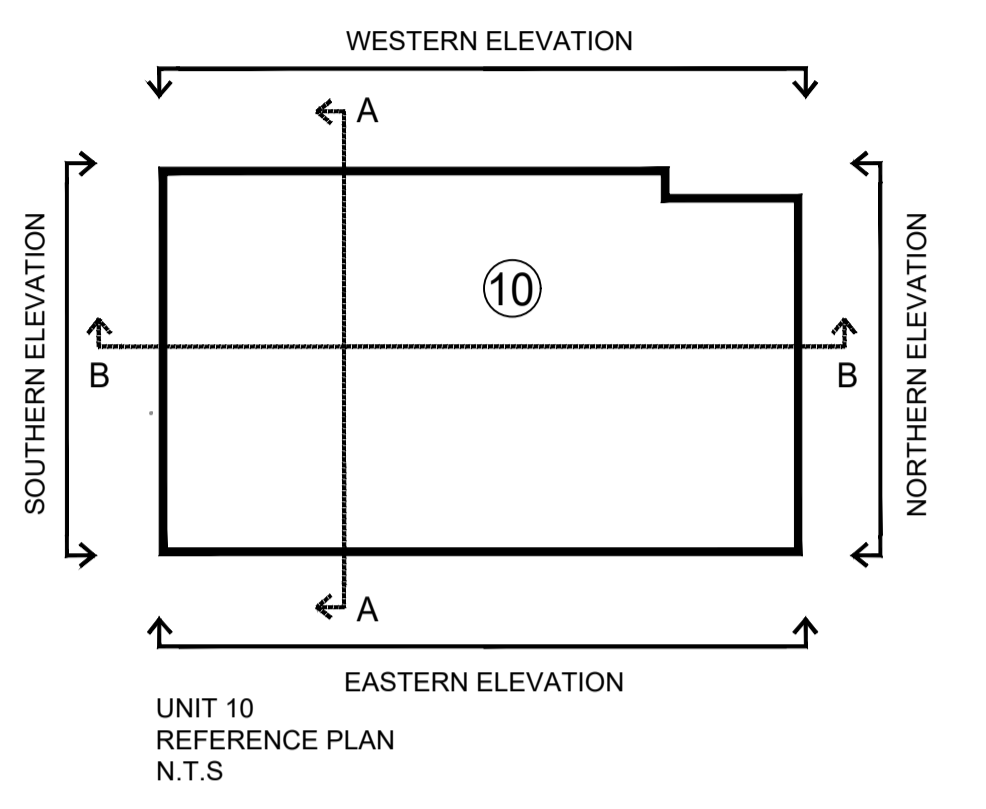




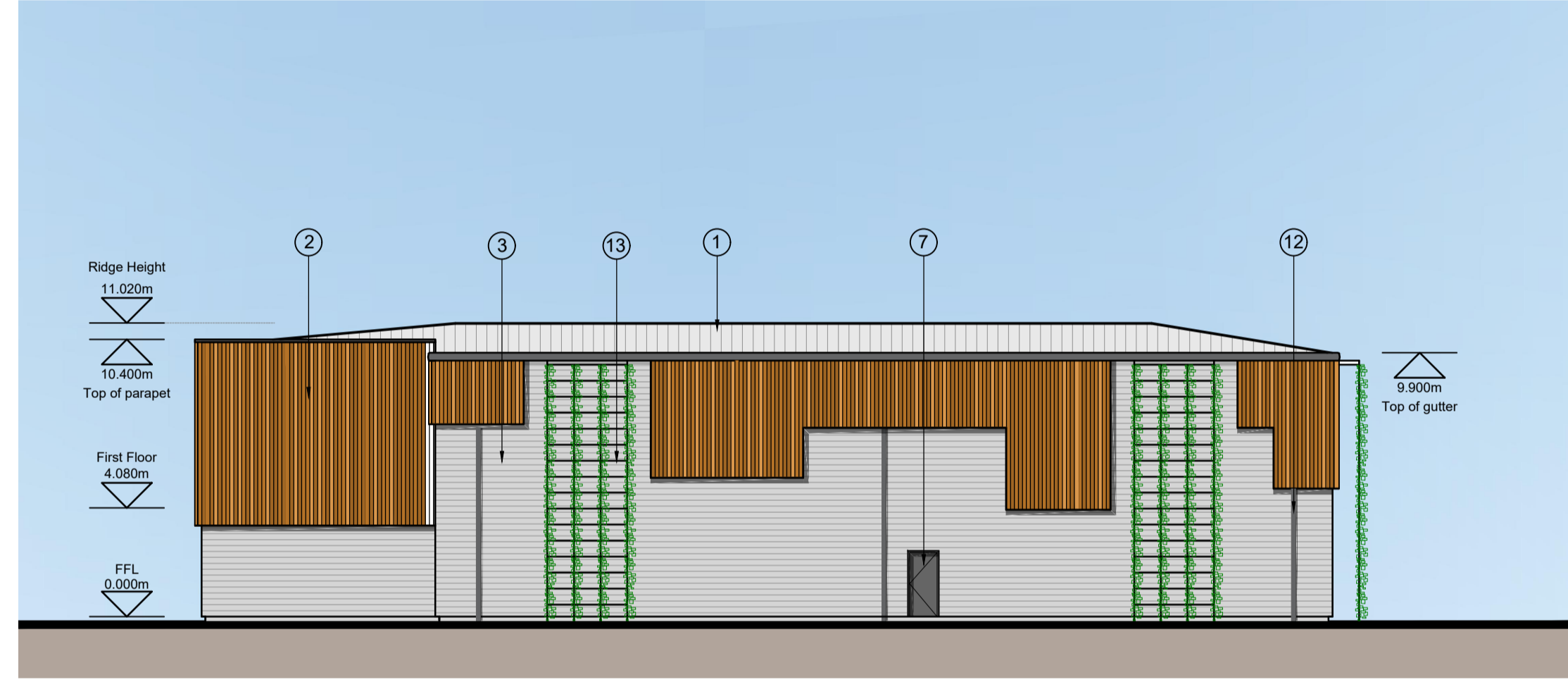
EASTERN ELEVATION



NORTHERN ELEVATION

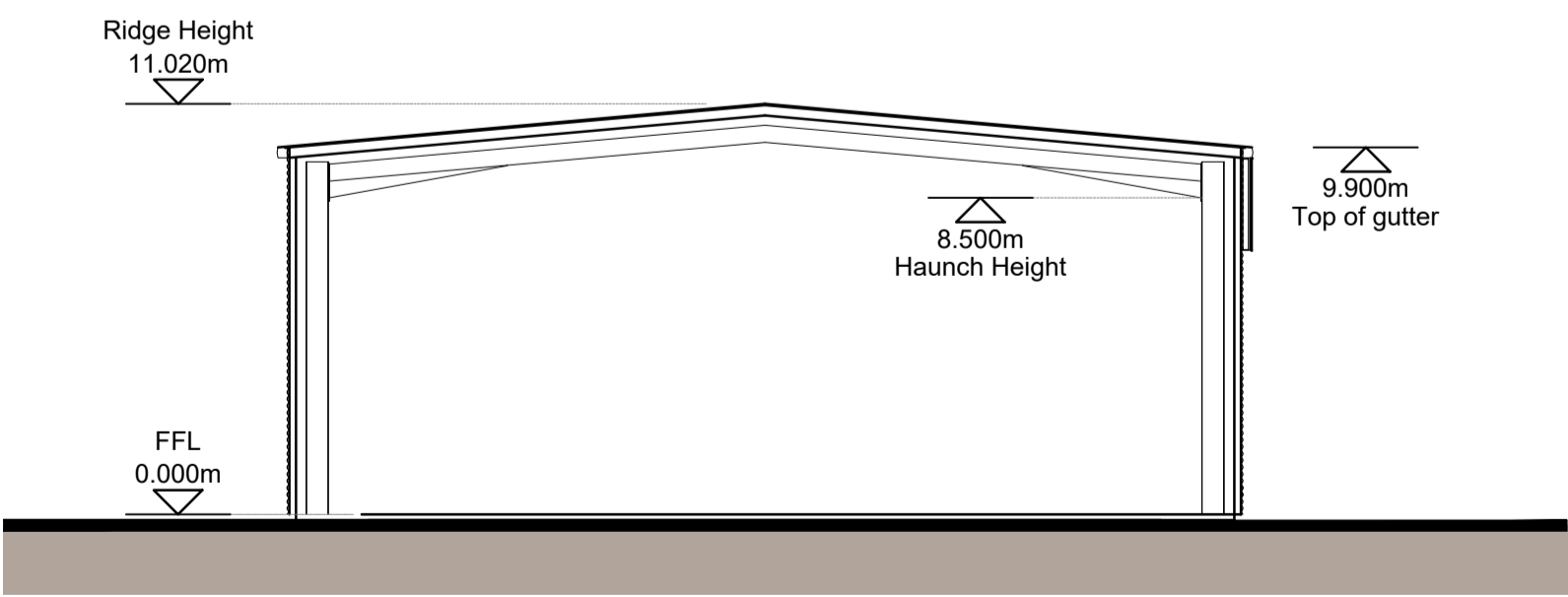


SOUTHERN ELEVATION

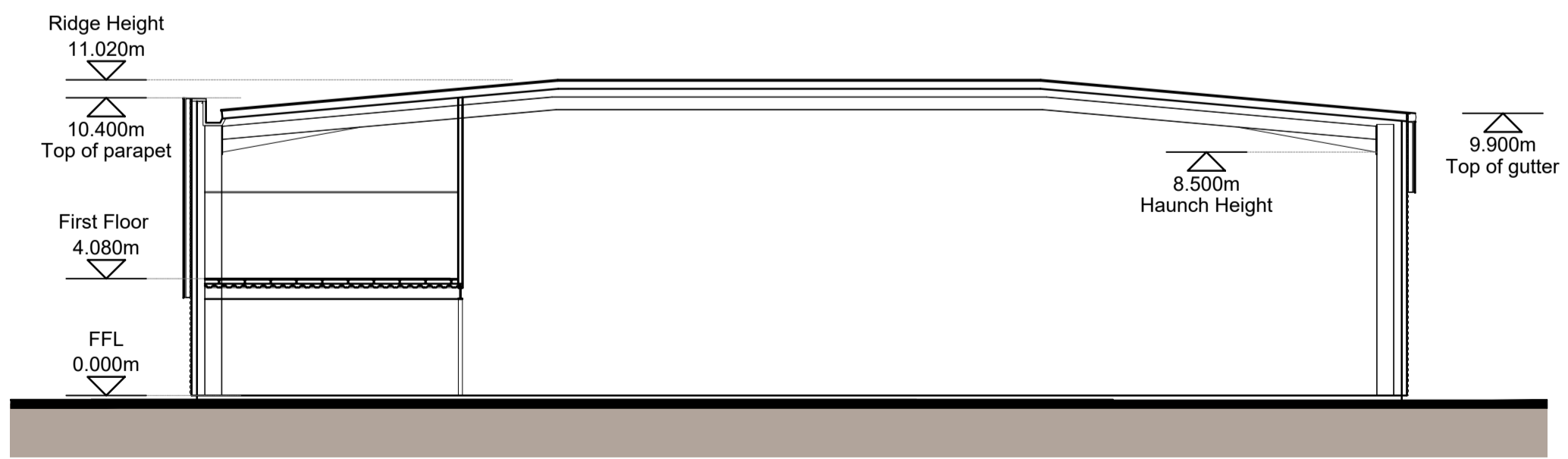


WESTERN ELEVATION

- MATERIALS KEY**
- ① PROFILED ROOF CLADDING (GOOSEWING GREY RAL 7038)
 - ② SIBERIAN LARCH CLADDING
 - ③ HORIZONTAL ARC PROFILE CLADDING (METALLIC SILVER RAL 9006)
 - ④ ALUMINIUM FRAMED WINDOWS (ANTHRACITE RAL 7016)
 - ⑤ ALUMINIUM FRAMED ENTRANCE DOORS AND FULL HEIGHT GLAZING (ANTHRACITE RAL 7016)
 - ⑥ LOADING BAY DOORS (ANTHRACITE RAL 7016)
 - ⑦ STEEL PERSONNEL DOORS (ANTHRACITE RAL 7016)
 - ⑧ STEEL BOLLARD (GREEN RAL 6018)
 - ⑨ MAIN ENTRANCE BRISE-SEIL
 - ⑩ SIGNAGE ZONE, INDICATIVE
 - ⑪ BACKLIT ILLUMINATED ALUMINIUM UNIT NUMERAL (RAL 6018 FACE)
 - ⑫ ALUMINIUM RAINWATER GOODS (ANTHRACITE RAL 7016)
 - ⑬ GREEN WALL



UNIT 10 SECTION AA



UNIT 10 SECTION BB

193

Client: HE2 READING 1 GP LTD (LONDON) **PRC**

Project: HEADLEY ROAD EAST WOODLEY
 12 Warren Yard, Warren Park, Milton Keynes, MK12 5NW 01908 305 246
 info@prc-group.com www.prc-group.com

Drawing Title: UNIT 10 PROPOSED ELEVATIONS & SECTION
 Scale @ A1: 1:200 Checked by: JR Date: SEPT 21
 Job No: 11359 Stage: PL 124 Drawing No: A

Issue Status:
 Construction Preliminary
 Information Approval
 Tender
 Offices: Working London Milton Keynes Warsaw

This page is intentionally left blank